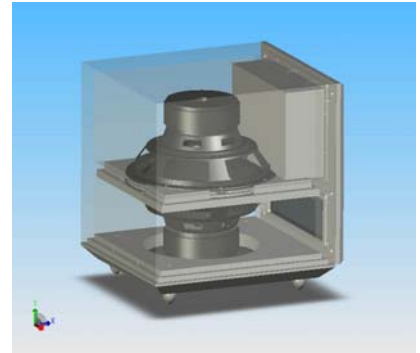




Saturn 12



The new Saturn 12 subwoofer is an ambitious technical project in the high end category. Its configuration offers and original Push Pull load with high performances. It represent a synthesis of technologies and technical know how used on BC Acoustique and Mosscade products.

Technical features:

- The **Push-Pull** principle uses 2 drivers facing each other inside the cabinet. One of them pushes while the other one pulls. Only the bottom driver radiates toward the floor. It creates a much more important internal pressure which produces out much more dynamic.
- The drivers are two 30cm (12") woofers with high excursion and a 50mm coil. The amplifier offers a power of **300W RMS** (500W for impulsion) in AB class.
- The Push Pull solution improves enormously the problem of distortion: the drivers always work together. This guarantees a perfectly **symmetrical movement**. The small excursion problems that exist in every driver and cause distortion are thus completely canceled.
- The size of the cabinet necessary for Push Pull load is twice smaller than for a more classic load (Bass-Reflex, Passive/Active...). The problem of placement in a room is thus facilitated.
- The woofers are connected in a serial circuit. This multiplies the **impedance** by two. Thus, the amplifier doubles its damping factor. This brings a higher stability and a better control of the drivers.
- With the electronic systems integrated, you can use the drivers to the maximum of their capacities without ever going too far by permanently adapting the frequency and the sound level. The amplifier can automatically limit a frequency at a given moment to avoid any possible mechanical sound saturation. Thus, the sound response is preserved and **no saturation is heard** whatever the level.

Position in the room and subjective characteristics:

- While listening, the Push Pull load brings a faster bass with better transient response and less dragging effect. The performances are improved most between 40 and 100Hz, frequencies for which the human ear is most sensible. This subwoofer is close to pure Hifi standards and answers a demand by music lovers for higher precision. Finally it is adapted and can be put close to a wall without creating the usual vibrations in the room.
- The Saturn 12 is available in Piano black or white or a cherry wood veneer.

▪ Dimensions	▪ 37cm x 45cm x 42cm (15"x18" x17")
▪ Specifications	▪ 25Hz – 120kHz ▪ 300/500W RMS
▪ Drivers	▪ 2 x12" woofers with high excursion ▪ Push Pull Configuration
▪ Finish	▪ Piano black or white ▪ Cherry